



No. 15

A fine Agate Brush Washer in the shape of a Double Gourd incised four-character Qianlong mark and of the period with finely carved wooden stand

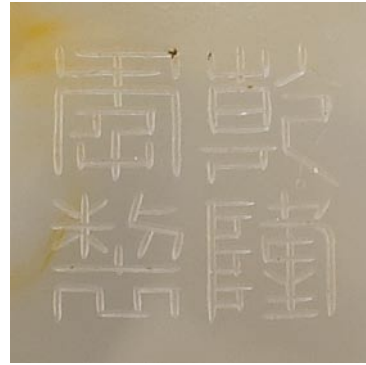
Qing Dynasty, Qianlong period (1736-95)

The agate of nearly translucent white colour with interesting splashes of brown. The brush washer hollowed to depict a double gourd with a small ring handle below the spout. The base with incised four-character “*qian long nian zhi*” mark.

The wooden base carved as a sea of curly waves.

L 4 in

清乾隆 瑪瑙琢葫蘆造型水丞



Four-character mark
“*qian long nian zhi*”

